



Gloucester Crescent, , Wigston, LE18 4YE

- Presented in Ready To Move in Condition
- Ideal First time buyer or Family Home
- Fitted kitchen-breakfast room
- Scope to extend
- 360 Virtual Tour
- Three Bedroom Sem-Detached
- Open plan Lounge-dining room
- Corner plot garden
- Gated Driveway and garage
- Local shops, schools and amenities

£275,000



Gloucester Crescent, , Wigston, LE18 4YE

DESCRIPTION

Nestled on the very popular Fairfield estate, this delightful semi-detached house is an ideal family home, ready for you to move in and enjoy. With no onward chain, this property offers a seamless transition for prospective buyers.

Upon entering, you are welcomed into a spacious open-plan lounge and dining room, perfect for both relaxation and entertaining family and friends. The adjoining conservatory provides a lovely view of the garden, allowing natural light to flood the space and creating a warm, inviting atmosphere.

The first floor boasts three generously sized bedrooms, each offering ample space for the family. The bathroom is a standout feature, equipped with a four-piece suite that includes a separate shower cubicle, ensuring convenience for all family members.

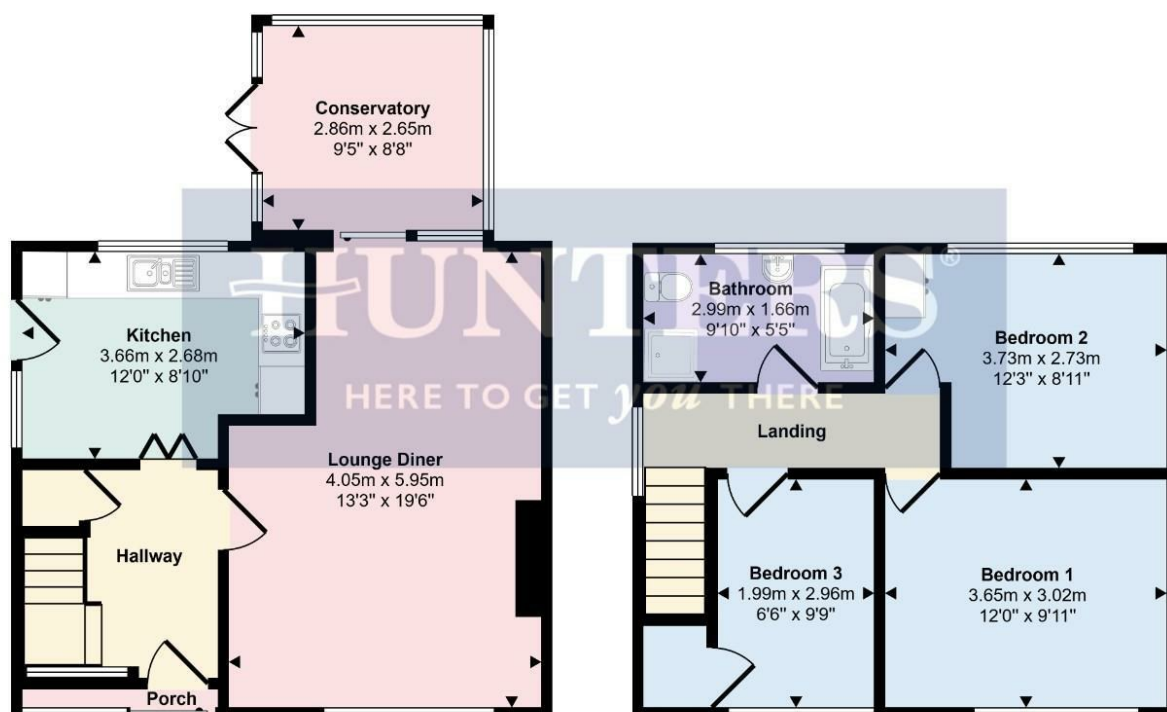
The rear garden is a true gem, featuring decorative stone gravel terrace and a well-maintained lawn, bordered by vibrant plants and flowers. A patio seating area invites you to enjoy al fresco dining or simply unwind in the fresh air. Additionally, the property benefits from a gated driveway and garage, providing secure parking and extra storage to the rear.

This home is not to be missed. With a 360-degree virtual tour available, you can explore every corner of this lovely property from the comfort of your own home. Contact your local Hunters estate agents in Wigston today to arrange a viewing and take the first step towards making this wonderful house your new home.





Approx Gross Internal Area
88 sq m / 947 sq ft



This floorplan is only for illustrative purposes and is not to scale. Measurements of rooms, doors, windows, and any items are approximate and no responsibility is taken for any error, omission or mis-statement. Icons of items such as bathroom suites are representations only and may not look like the real items. Made with Made Snappy 360.

Viewings

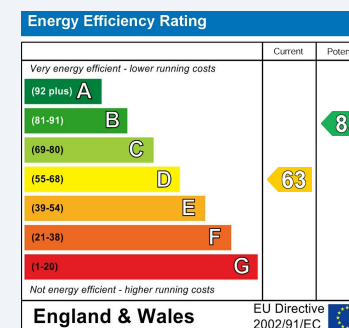
Please contact wigston@hunters.com, if you wish to arrange a viewing appointment for this property or require further information.

Valuations

For a valuation of your property, please email the team with your property details, contact information and the times you are available.

ENERGY PERFORMANCE CERTIFICATE

The energy efficiency rating is a measure of the overall efficacy of a home. The higher the rating the more energy efficient the home is and the lower the fuel bills will be.



These particulars are intended to give a fair and reliable description of the property but no responsibility for any inaccuracy or error can be accepted and do not constitute an offer or contract. We have not tested any services or appliances (including central heating if fitted) referred to in these particulars and the purchasers are advised to satisfy themselves as to the working order and condition. If a property is unoccupied at any time there may be reconnection charges for any switched off/disconnected or drained services or appliances - All measurements are approximate.

THINKING OF SELLING? If you are thinking of selling your home or just curious to discover the value of your property, Hunters would be pleased to provide free, no obligation sales and marketing advice. Even if your home is outside the area covered by our local offices we can arrange a Market Appraisal through our national network of Hunters estate agents.